

## KEY FACTS

### RIKERS ISLAND **DEMOGRAPHICS**

#### RACE / ETHNICITY

(SOURCE: ISLG-NOTE: MEASURES RACE IN ADMISSIONS)

BLACK /  
AFRICAN-AMERICAN

WHITE

HISPANIC /  
LATINO

ASIAN /  
PACIFIC ISLANDER

OTHER /  
UNKNOWN



BLACKS ARE NEARLY 9 TIMES MORE LIKELY  
TO BE ADMITTED TO JAILS THAN WHITES

**54%**

**9%**

**33%**

**1.5%**

**2.9%**



**SEX**

**93%**

**7%**



AVG.  
**AGE**  
AT ADMISSION

**35**



#### MENTAL HEALTH NEEDS / **SERIOUS MENTAL ILLNESS**

**11%**

HAVE SERIOUS  
AND PERSISTENT  
MENTAL ILLNESS

**42%**

HAVE "M"  
DESIGNATION (NEED  
FOR SERVICES)

Source: ISLG- NOTE: Measures Race in Admissions

**\$1,000** Misdemeanor median  
bail

Source: New York City Criminal Justice Agency, Inc. (CJA)

**\$5,000** Felony median bail

Source: New York City Criminal Justice Agency, Inc. (CJA)

Approx. **50%** of people who have  
bail set are unable to pay and are  
detained during their entire case

Source: Vera Institute of Justice

**70%** of people are released on  
recognizance (ROR) at  
arraignments

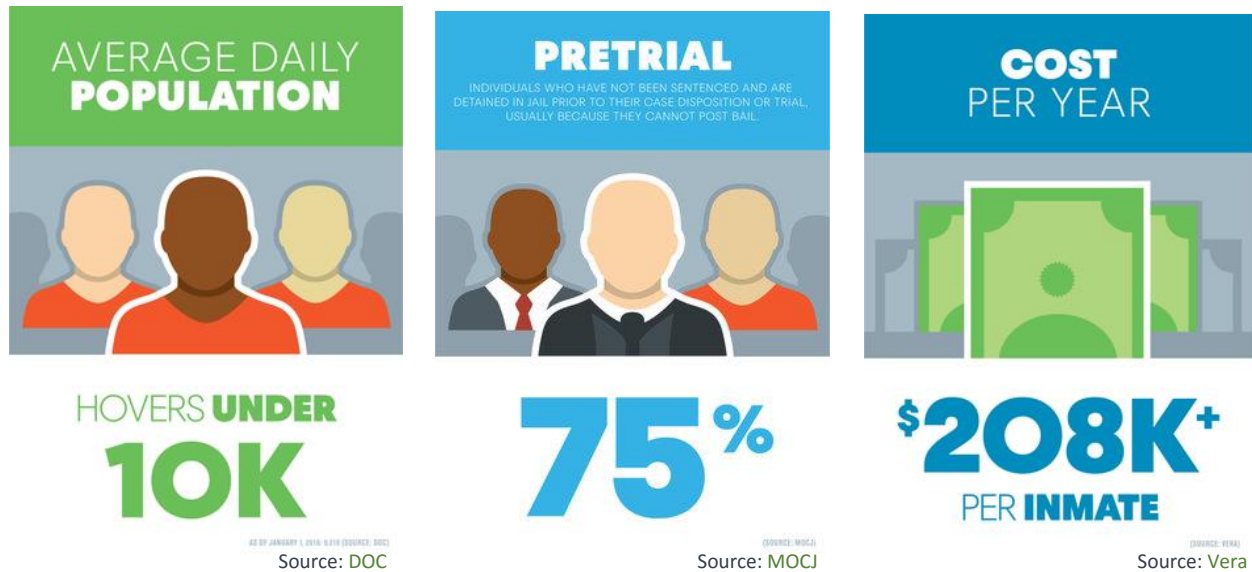
Source: New York City Criminal Justice Agency, Inc. (CJA)

For more information, visit the Commission's website at [www.morejustnyc.com](http://www.morejustnyc.com)

Contact the Commission at [yourvoice@morejustnyc.com](mailto:yourvoice@morejustnyc.com)



## New York City Jail Population



The New York City jail population has **dropped by 13% since 2013** as a result of efforts by the City and partners, including the court system, defense bar, prosecutors, and community-based organizations.

Source: Mayor's Office of Criminal Justice (MOCJ)

## Average Daily Jail Population First Half of 2016

